

Can I run a Photoshop action from Lightroom?

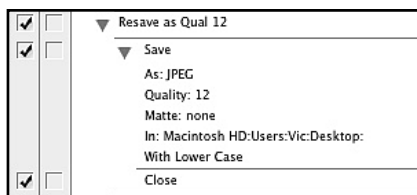
Lightroom's not designed to be a file browser, so it doesn't work quite like Bridge, but it's still possible to run Photoshop actions on your exported photos without user intervention. The solution involves creating a droplet in Photoshop from an existing action, and then telling Lightroom to run the droplet after exporting the photos.

Create the Action

In Photoshop, you need to have already created an action—if you're not familiar with creating Photoshop actions, there are plenty of web resources which will take you through step-by-step.

If you're going to run the action on JPEGs, it must include a 'Save As' step to set the JPEG quality, otherwise it'll ask for a quality setting for each and every photo, defeating the object of automating it! To do so, in the Save As dialog, just press OK without changing the filename or location, and make sure you choose your quality setting—you'll override the location in the Create Droplet dialog.

The resulting Action will look something like this simple 're-save as quality 12' action.



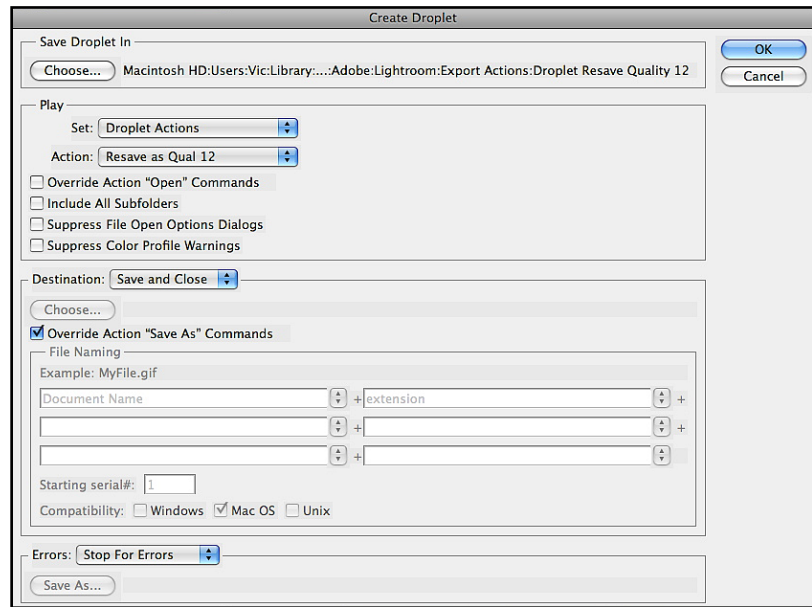
Create the Droplet

Go to File > Automate > Create Droplet to view the Create Droplet dialog.

Save your droplet somewhere safe with a logical name, and make sure you've set the save location to 'Save and Close' to overwrite the exported file, and tick the 'Override save location' box. If you don't

Adobe Lightroom 3 - The Missing FAQ

want to overwrite the exported file when running the droplet, set your destination folder instead. Click OK to create your droplet.



Add the Droplet to Lightroom

Open Lightroom, select a photo, and go to the Export dialog. At the bottom of the dialog, you'll see the Post-Processing pop-up menu. Click 'Go to Export Actions Folder Now' at the end of the pop-up menu to show you that folder in Explorer (Windows) / Finder (Mac). Drop a shortcut/alias to your droplet in the folder which appears, or move the droplet itself, and then close the Export dialog box.

Export Actions

When you reopen the Export dialog box to export your photos from Lightroom, your droplet will appear in the Post-Processing pop-up menu. Export your photos from Lightroom, with your new droplet selected in that pop-up menu, and once the photos have finished exporting they should automatically open Photoshop and run your action.

