

How does Export from Catalog work?

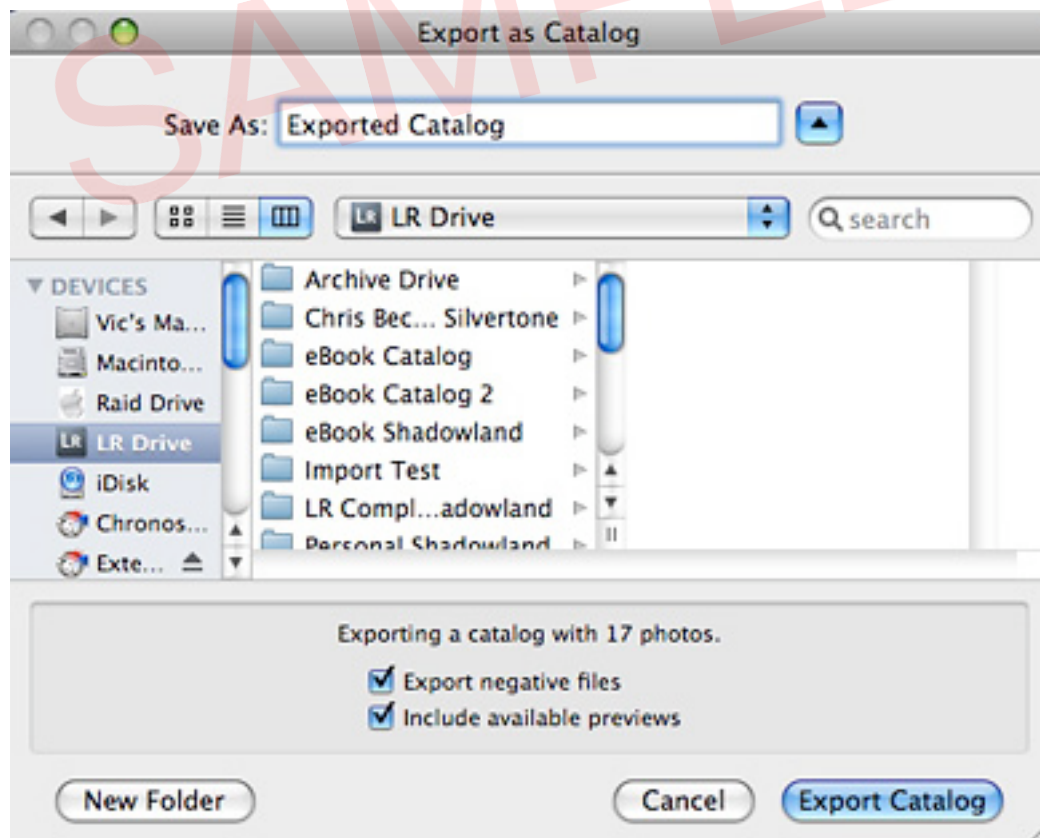
Export from Catalog allows you to take a subset of your catalog - perhaps a folder or collection - and create another catalog from those photos, complete with all of your metadata, and the previews and original files too if you wish. You can then take that catalog to another computer, and merge it back in later if you so choose.



[See 'How does Import from Catalog work?' on page 41](#)

To split your catalog using Export from Catalog, you first need to decide on the photos you wish to include. You can export any selected photos using File menu > Export as Catalog, or a folder or collection from the right-click context sensitive menu > 'Export the Folder/Collection as Catalog' commands.

In the following dialog, choose a location for your exported catalog.



In that same dialog, you also choose whether to 'Export negative files', which will create duplicates of your original files in the same location as the exported catalog. This is particularly useful when taking a subset of your catalog to another computer.

You have the option to 'Include available previews', which will export the previews if they have already been rendered. This is important if you're exporting a catalog subset to take to another computer but you won't be taking the original files with you. You'll still be able to work on Metadata updates such as rating and keywording even without the original files or negatives.

The resulting catalog is a standard catalog, just like any other. If you've chosen to 'Export negative files', there will also be a subfolder called 'Images', with copies of your original files in folders reflecting their original folder structure.

You can transfer that catalog to any computer, and either double-click on it to open, hold down Ctrl (Windows) / Opt (Mac) on starting Lightroom, or use the File menu > Open Catalog... command to open it.

Having finished working on that catalog, you can use Import from Catalog to merge it back into your main catalog.



[See 'How does Import from Catalog work?' on page 41 and 'Multiple Machines' section starting on page 49](#)