

MISSING FILES

At some stage, most people run into worrying question marks denoting missing files, which are usually a result of files being moved or renamed outside of Lightroom, or an external drive being unplugged and changing its drive letter. If that happens, Lightroom can no longer find the photos at their original location and needs pointing back in the right direction.

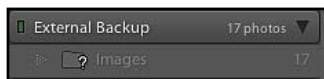


Missing files can be identified by a little question mark in the corner of the Grid thumbnail, or if the entire folder can no longer be found, the folder name in the Folders panel will go grey with a question mark folder icon. When you switch to the Develop module or try to export those files, Lightroom will tell you that the file is offline or missing.

The file named "20040515-145437.jpg" is offline or missing.

Lightroom thinks my photos are missing—how do I fix it?

If Lightroom tells you that files are missing, before you start relinking, first check whether it's only specific files, or whether the folders are missing too. If you relink a file, it won't then allow you to relink the whole folder hierarchy as that new location will already exist in the catalog.



If the whole folder's missing and the folder name has turned grey, you can right-click on the folder and select 'Find Missing Folder...'. Point Lightroom to the new location, and it should update the links for all of the photos contained in that folder and its subfolders as long as their names haven't changed. If a whole hierarchy of folders has gone missing, perhaps because the drive letter's changed, you can relink just the parent folder, and it will cascade through all of the

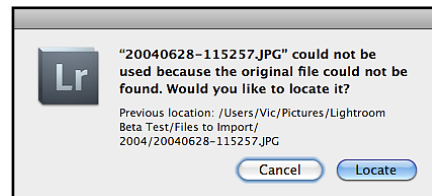


Also check...

"I have a long list of folders—can I change it to show the folder hierarchy?" on page 149

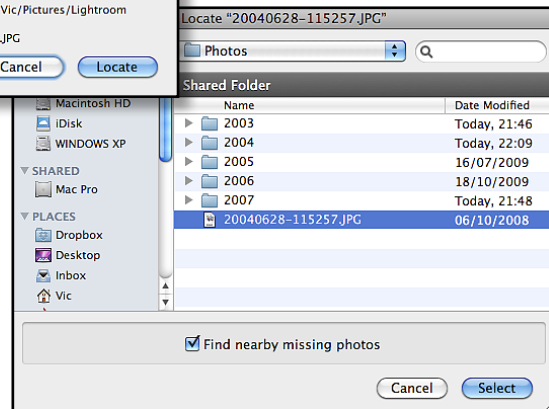
other missing files without further interaction. That's why it's useful to set your Folders panel up as a hierarchy before you run into problems.

If it's just specific files which have moved, click on the question mark icon, and a dialog will appear giving you a clue to its last known location.



Locate the missing file, and check the 'Find nearby missing

photos' checkbox shown in the dialog above in order to try to automatically relink other files in the same folder. Unfortunately if



you've renamed the files outside of Lightroom, each file will need linking individually, but there are a couple of workarounds that we'll cover in a moment.