

## Can I run a Photoshop action from Lightroom?

Lightroom is not designed to be a file browser, so it doesn't work quite like Bridge, but it's still possible to run Photoshop Actions on your exported photos without user intervention.

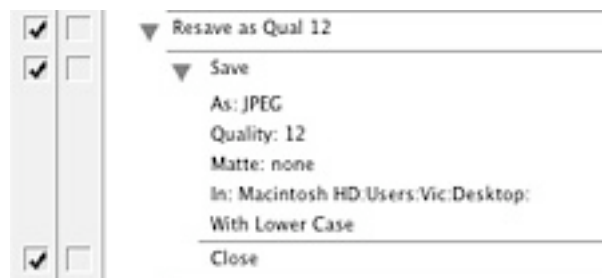
The solution involves creating a droplet in Photoshop from an existing action, and then telling Lightroom to run the droplet once it's exported the photos.

### Create the Action

1. In Photoshop, you need to have already created an action - if you're not familiar with creating Photoshop actions, there are plenty of web resources which will take you through step-by-step.

If you are going to run this on JPEGs, it must include a Save As to set the JPEG quality, otherwise it'll ask for a quality setting for each and every image, defeating the object of automating it! To do so, when running the Save As while recording the action, just hit OK without changing the file name or location, and make sure you choose your quality setting - you'll override the location in the Droplet dialog.

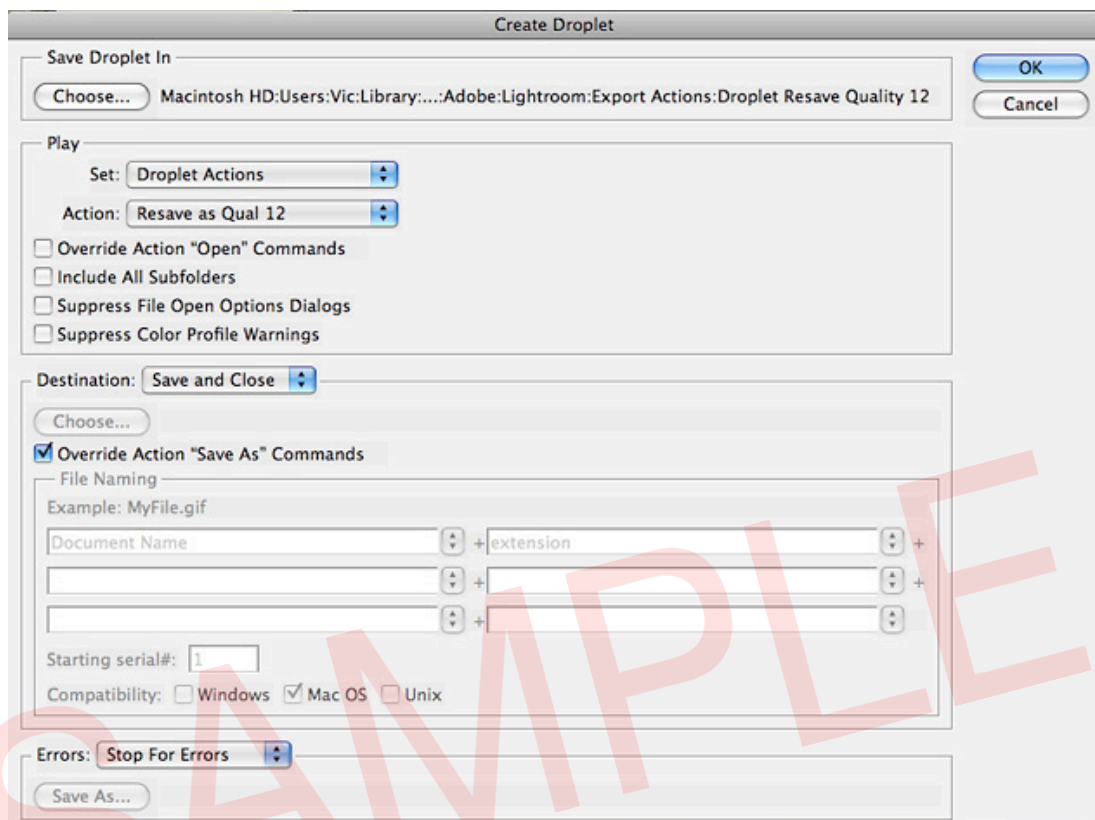
The resulting action will look something like this... this is a simple re-save as quality 12 action.



[See 'How do I set it to a JPEG level 0-12 so that Photoshop doesn't ask me every time I save?' on page 230](#)

### Create the Droplet

2. Go to File > Automate > Create Droplet and this dialog will appear:



3. Save your droplet somewhere safe with a logical name, and make sure you've set the save location to either Save and Close to overwrite the Exported file, and tick the 'Override save location' box. If you don't wish to overwrite the Exported file when running the droplet, set your destination folder instead. Click OK to create your droplet.

### Add the Droplet to Lightroom

4. Open Lightroom, select a photo, and go to Export. At the bottom of the dialog you will see 'After Export' drop-down. Click 'Go to Export Actions Folder Now' at the end of the drop-down list to show you that folder in Explorer (Windows) / Finder (Mac). Drop a shortcut/alias to your droplet in the

folder which appears. If you'd prefer, you can drop the droplet itself into that folder, rather than a shortcut/alias. Close the Export dialog box.

### Export Actions

5. When you reopen the Export dialog box to export your photos from Lightroom, your droplet will appear in that 'After Export' drop-down list.



6. Export your photos from Lightroom, with your new droplet selected, and once the photos have finished exporting, they should automatically open Photoshop and run your action.

You can also use droplets to save to another location - you don't have to save over the top. See how many droplet ideas you can come up with!